

IKA

designed for scientists

EN



Innovative laboratory solutions for your research
PRODUCT OVERVIEW

imLab



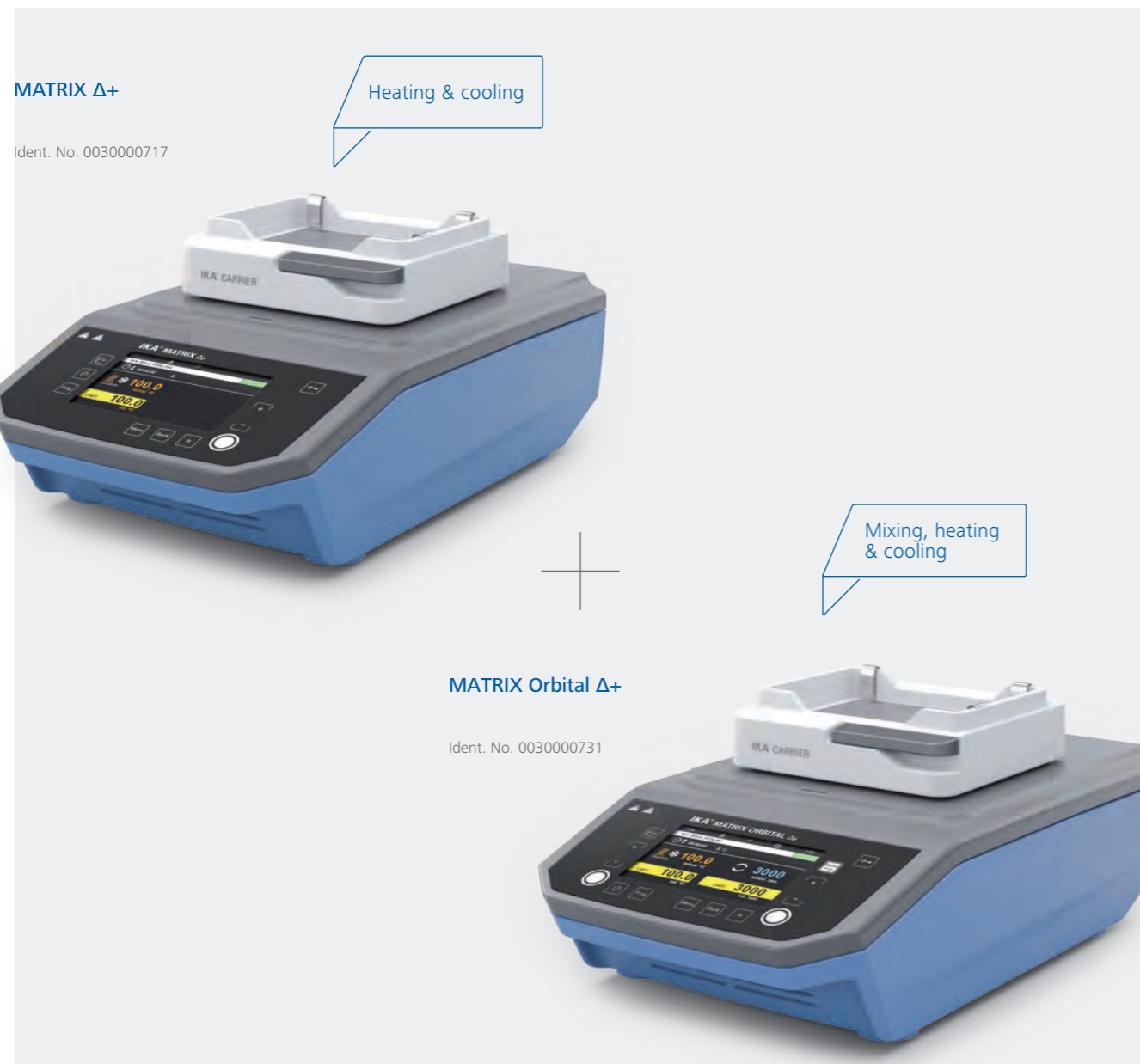
www.imlab.eu - info@imlab.eu



+33(0)3 20 55 19 11



+32(0)16 73 55 72



MATRIX Δ+

Ident. No. 0030000717

Heating & cooling

MATRIX Orbital Δ+

Ident. No. 0030000731

Mixing, heating & cooling

TECHNICAL DATA

	MATRIX Δ+	MATRIX ORBITAL Δ+
Type of movement	-	Orbital
Speed range	-	300 – 3000 rpm
Shaking stroke	-	3 mm
Heating range	RT -30 °C – 110 °C	RT -15 °C – 100 °C
Permissible shaking weight (incl. attachment)	0.3 kg	0.3 kg
Operating mode	Timer and continuous operation	Timer and continuous operation
Dimensions (W x H x D)	216 x 127 x 351 mm	216 x 127 x 351 mm
Protection class according to DIN EN 60529	IP 21	IP 21

Product	Description	Ident. No.	
ACCESSORIES THERMOSHAKERS			
(A)	MX cover	Cover	0030001253
(B)	MX thermocover	Cover, heatable	0030001244
(C)	MX 50.0 ml	Attachment for vials, 4 x 50 ml vials	0030000863
(D)	MX 15.0 ml	Attachment for vials, 8 x 15 ml vials	0030000821
(E)	MX 5.0 ml	Attachment for vials, 8 x 5 ml vials	0030000859
(F)	MX 2.0 ml	Attachment for vials, 24 x 2.0 ml vials	0030000834
(G)	MX 1.5 ml	Attachment for vials, 24 x 1.5 ml vials	0030000829
(H)	MX 12.0 mm	Attachment for vials, 24 x 12 mm vials	0030000844
(I)	MX cryo	Attachment for vials, 24 x cryo vials	0030000848
(J)	MX 0.5 ml	Attachment for vials, 24 x 0.5 ml vials	0030000840
(K)	MX PCR96	Attachment for 96 PCR plates	0030000853
(L)	MX PCR384	Attachment for 384 PCR plates	0030000857
(M)	MX carrier	Attachment for microtiter plates	0030000849
(3)	MX insert 1.5/2.0 ml	Insert for 1.5 / 2.0 ml vials	0030001158
(2)	MX insert 0.5 ml	Insert for 0.5 ml vials	0030001157
(1)	MX insert PCR96	Insert for 0.2 ml PCR vials	0030001159



Shaken, not stirred. At IKA, experience and passion for the laboratory shaker go back nearly 100 years. Today we cover the entire range of motion in mixing technology. In combination with innovative automation, high-quality materials and ergonomic design, people rock, roll, turn and shake with us.

KS 3000 IC CONTROL

/// Incubator shaker

The KS 3000 ic control is a universal benchtop incubation shaker. It mixes and incubates, making it ideal for cultivating cells, bacterial suspensions, hybridization, staining and decolorizing, and metabolic studies. In addition to experiments with biological cultures, it is also ideal for solubility studies, extraction processes and general mixing processes.



VERSATILE – THANKS TO ITS MANY ACCESSORIES

Under its hood, the KS 3000 ic control offers you a world of options: Countless attachments, flasks, bowls and vessels make this simple device so versatile and make it stand out among incubation shakers.

HEAVY SHAKING WEIGHT

With a shaking weight of 7.5 kg, which is a lot for its compact size, the KS 3000 ic control is an extremely powerful laboratory shaker.

TEMPERATURE CONTROL WITHIN THE MEDIUM

KS 3000 ic control not only has a heat exchanger, it also has a sensor in the medium. This allows the temperature to be set directly within the sample.

① KS 3000 i control

Ident. No. 0003940000

② KS 3000 ic control

Ident. No. 0003940100



KS 3000 ic with built-in cooling coil

②

Allows unattended operation

① KS 4000 i control

Ident. No. 0003510000

② KS 4000 ic control

Ident. No. 0003510100



①

TECHNICAL DATA	KS 3000 I IC	KS 4000 I IC
Type of movement	Orbital	Orbital
Permissible shaking weight (incl. attachment)	7.5 kg	20 kg
Speed range	10 – 500 rpm	10 – 500 rpm
Timer display	7 segment LED	7 segment LED
Speed display	LED	LED
Operating mode	Timer and continuous operation	Timer and continuous operation
Temperature range (inlet T>3°C)	RT +5 °C – 80 °C RT -10 °C – 80 °C	RT +5 °C – 80 °C RT -10 °C – 80 °C
Total volume inner chamber	50 l	90 l
Dimensions (W x H x D)	465 x 430 x 695 mm	580 x 525 x 750 mm
Protection class according to DIN EN 60529	IP 30	IP 30

① **ROCKER 2D basic**
Ident. No. 0004002000

② **ROCKER 2D digital**
Ident. No. 0004003000



① **ROCKER 3D basic**
Ident. No. 0004000000

② **ROCKER 3D digital**
Ident. No. 0004001000



① **ROLLER 6 basic**
Ident. No. 0004010000

② **ROLLER 6 digital**
Ident. No. 0004011000



① **ROLLER 10 basic**
Ident. No. 0004012000

② **ROLLER 10 digital**
Ident. No. 0004013000



TECHNICAL DATA	ROCKER 2D BASIC DIGITAL	ROCKER 3D BASIC DIGITAL	ROLLER 6 BASIC DIGITAL	ROLLER 10 BASIC DIGITAL
Type of movement	Rocking	Tumbling	Rocking and rolling	Rocking and rolling
Speed range	0 – 80 rpm	30 rpm 0 – 80 rpm	30 rpm 0 – 80 rpm	30 rpm 0 – 80 rpm
Timer display	– 7 segment LED	– 7 segment LED	– 7 segment LED	– 7 segment LED
Speed display	– 7 segment LED	– 7 segment LED	– 7 segment LED	– 7 segment LED
Operating mode	Continuous operation Timer and continuous operation	Continuous operation Timer and continuous operation	Continuous operation Timer and continuous operation	Continuous operation Timer and continuous operation
Dimensions (W x H x D)	280 x 150 x 330 mm	280 x 165 x 330 mm 280 x 185 x 330 mm	240 x 115 x 545 mm	380 x 115 x 545 mm
Protection class according to DIN EN 60529	IP 21	IP 21	IP 21	IP 21

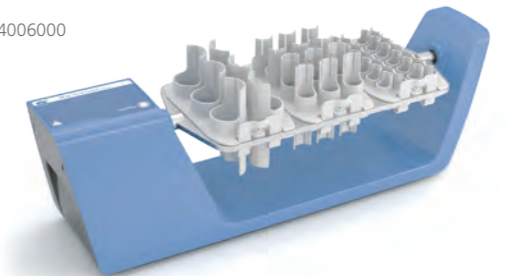
① **Loopster basic**
Ident. No. 0004015000

② **Loopster digital**
Ident. No. 0004016000



① **Trayster basic**
Ident. No. 0004005000

② **Trayster digital**
Ident. No. 0004006000



① **Hula Dancer basic**
Ident. No. 0025004320

② **Hula Dancer digital**
Ident. No. 0025003634



① **MS 3 basic**
Ident. No. 0003617000

② **MS 3 digital**
Ident. No. 0003319000

③ **MS 3 control**
Ident. No. 0020016017



TECHNICAL DATA	LOOPSTER BASIC DIGITAL	TRAYSTER BASIC DIGITAL	HULA DANCER BASIC DIGITAL	MS 3 BASIC DIGITAL CONTROL
Type of movement	Rotating	Overhead	Orbital	Orbital
Permissible shaking weight (incl. attachment)	2 kg	2 kg	0.1 kg	0.5 kg
Speed range	20 rpm 0 – 80 rpm	20 rpm 0 – 80 rpm	2800 rpm 1200 – 2800 rpm	200 – 3000 rpm 200 – 3000 rpm 100 – 3000 rpm
Timer display	– 7 Segment LED	– 7 Segment LED	– –	– 7 Segment LED LCD
Operating mode	Continuous operation Timer and continuous operation	Continuous operation Timer and continuous operation	–	Continuous operation Timer and continuous operation Timer and continuous operation
Dimensions (W x H x D)	300 x 360 x 300 mm	460 x 180 x 140 mm	123 x 42 x 123 mm	148 x 63 x 205 mm
Protection class according to DIN EN 60529	IP 21	IP 21	IP 42	IP 21

VORTEX 2

Ident. No. 0025000258



VORTEX 3

Ident. No. 0003340000



HANDS FOR CHILDREN

The aid project HANDS FOR CHILDREN was created in 2000 by IKA owner and Managing Director René Stiegelmann. In the context of this voluntary initiative, retired IKA employees assemble laboratory equipment free-of-charge, so that the proceeds can be used for children's charity programs. More than 2000 voluntary hours per year are used for the benefit of medical care for disabled children in Uganda and for schooling programs in Tanzania, for example.

TECHNICAL DATA	VORTEX 2	VORTEX 3
Type of movement	Orbital	Orbital
Speed range	500 – 2500 rpm	0 – 2500 rpm
Timer	No	No
Speed display	Scale	Scale (0-6)
Operating mode	Continuous / touch operation	Continuous / touch operation
Permissible shaking weight (incl. attachment)	0.4 kg	0.4 kg
Dimensions (W x H x D)	120 x 140 x 138 mm	127 x 136 x 149 mm
Protection class according to DIN EN 60529	IP 21	IP 21

VORTEX 1

Ident. No. 0004047700



MTS 2/4 digital

Ident. No. 0003208000

For shaking two or four microtiter plates



VXR basic Vibrax®

Ident. No. 0002819000



lab dancer

Ident. No. 0003365000



TECHNICAL DATA	VORTEX 1	VXR BASIC VIBRAX®	MTS 2/4 DIGITAL	LAB DANCER
Type of movement	Orbital	Orbital	Orbital	Orbital
Speed range	1000 – 2800 rpm	100 – 2200 rpm	50 – 1100 rpm	2800 rpm
Timer	–	–	Yes	–
Speed display	–	Scale	Scale	–
Operating mode	Touch operation	Continuous operation	Timer and continuous operation	Touch operation
Permissible shaking weight (incl. attachment)	0.1 kg	2 kg	1 kg; 2/4 MT-plates	0.1 kg
Dimensions (W x H x D)	95 x 70 x 110 mm	157 x 130 x 247 mm	185 x 105 x 320 mm	100 x 70 x 100 mm
Protection class according to DIN EN 60529	IP 40	IP 21	IP 21	IP 40

① **KS 130 basic**

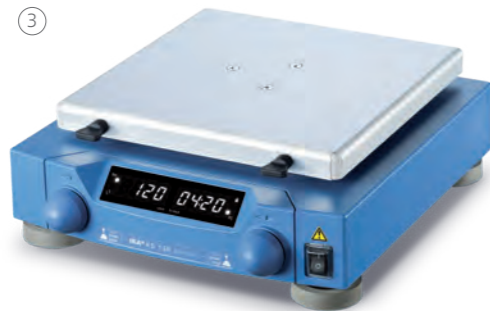
Ident. No. 0002980000

② **KS 130 control**

Ident. No. 0002980100

KS 130 control NOL

③ Ident. No. 0004278200



① **KS 260 basic**

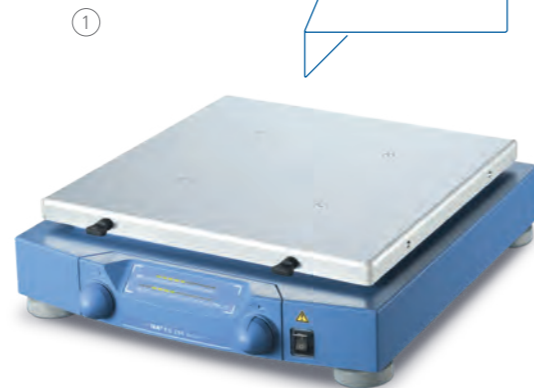
Ident. No. 0002980200

② **KS 260 control**

Ident. No. 0002980300

KS 260 control NOL

③ Ident. No. 0004278400



TECHNICAL DATA	KS 130 BASIC CONTROL	KS 260 BASIC CONTROL
Type of movement	Orbital	Orbital
Shaker diameter	4 mm	10 mm
Permissible shaking weight (incl. attachment)	2.0 kg	7.5 kg
Speed range	80 – 800 rpm	50 – 500 rpm 10 – 500 rpm
Timer display	LED line LCD	LED line LCD
Speed display	LED line LCD	LED line LCD
Operating mode	Timer and continuous operation	Timer and continuous operation
Dimensions (W x H x D)	270 x 98 x 316 mm	360 x 98 x 420 mm
Protection class according to DIN EN 60529	IP 21	IP 21

① **HS 260 basic**

Ident. No. 0003066600

② **HS 260 control**

Ident. No. 0003066700

HS 260 control NOL

③ Ident. No. 0004278600



① **HS 501 digital**

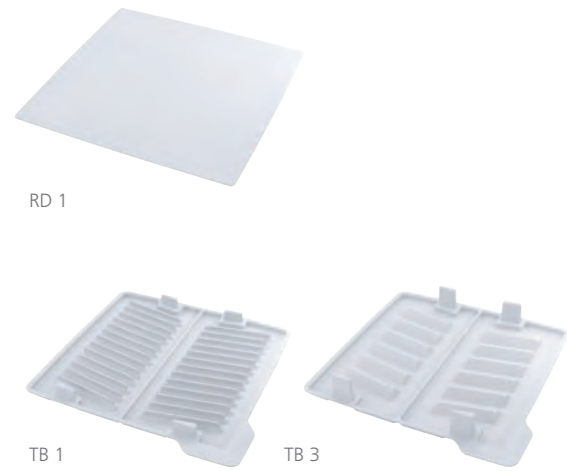
Ident. No. 0025002982

② **KS 501 digital**

Ident. No. 0025002985

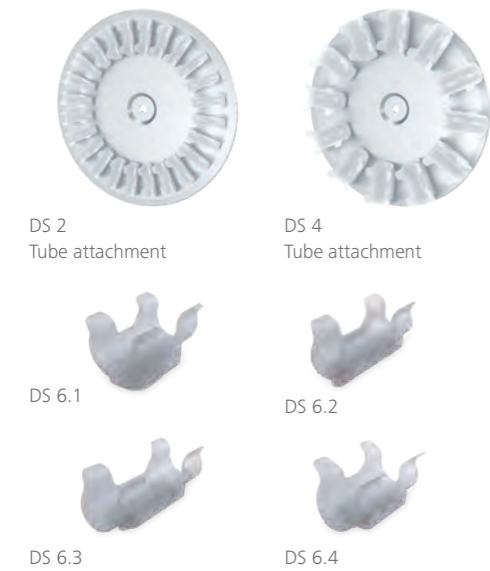


TECHNICAL DATA	HS 260 BASIC CONTROL	HS 501 DIGITAL KS 501 DIGITAL
Type of movement	Reciprocating	Reciprocating Orbital
Shaker diameter	20 mm	30 mm
Permissible shaking weight (incl. attachment)	7.5 kg	15 kg
Speed range	20 – 300 rpm 10 – 300 rpm	0 – 300 rpm
Timer display	LED line LCD	Scale
Speed display	LED line LCD	7 segment LED
Operating mode	Timer and continuous operation	Timer and continuous operation
Dimensions (W x H x D)	360 x 100 x 420 mm	505 x 120 x 585 mm
Protection class according to DIN EN 60529	IP 21	IP 21



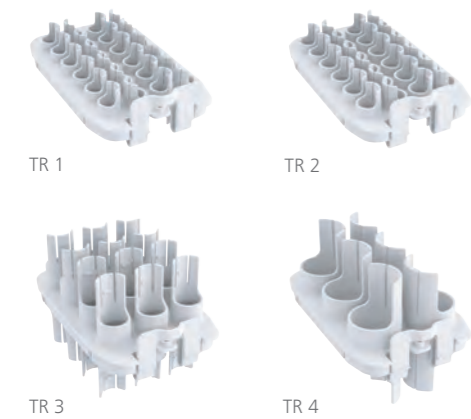
Product	Description	Ident. No.
ACCESSORIES ROCKER		
A 2	Second level attachment	0004581700
RD 1	Universal mat	0004532000
RD 2	Burled mat	0004532100
TB 1	Tray, 24 x 5 ml, Ø 12 mm	0004532200
TB 2	Tray, 12 x 15 ml, Ø 16 mm	0004532300
TB 3	Tray, 10 x 30 ml, Ø 25 mm	0004532400
TB 4	Tray, 8 x 30 ml, Ø 28 mm	0004532500

ACCESSORIES LOOPSTER



DS 1	Tube attachment, 48 x 1.5 ml, Ø 10 mm	0004524000
DS 2	Tube attachment, 24 x 5 ml, Ø 12 mm	0004524100
DS 3	Tube attachment, 20 x 15 ml, Ø 16 mm	0004524200
DS 4	Tube attachment, 2 x 30 ml, Ø 25 mm	0004524300
DS 5	Tube attachment, 12 x 50 ml, Ø 28 mm	0004524400
DS 6	Universal disc	0004524500
DS 6.1	Spare clips, Ø 10 mm, 12 pcs.	0004524600
DS 6.2	Spare clips, Ø 12 mm, 12 pcs.	0004524700
DS 6.3	Spare clips, Ø 16 mm, 12 pcs.	0004524800
DS 6.4	Spare clips, Ø 25 mm, 12 pcs.	0004524900
DS 6.5	Spare clips, Ø 28 mm, 12 pcs.	0004525000

ACCESSORIES TRAYSTER



TR 1	Tube insert, 24 x 1.5 ml, Ø 10 mm	0004525100
TR 2	Tube insert, 24 x 5 ml, Ø 12 mm	0004525200
TR 3	Tube insert, 12 x 15 ml, Ø 16 mm	0004525300
TR 4	Tube insert, 6 x 50 ml, Ø 28 mm	0004525400



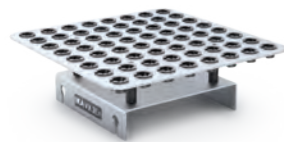
Product	Description	Ident. No.
ACCESSORIES MS 3 BASIC DIGITAL CONTROL		
MS 3.1	Standard attachment	0003426300
MS 3.3	Universal attachment	0003426600
MS 1.21	One-hand insert	L001540
MS 1.30	Attachment for 0.5 ml tubes	0025005776
MS 1.31	Test tube insert, 14 x Ø 10 mm	L001840
MS 1.32	Test tube insert, 6 x Ø 12 mm	L001850
MS 1.33	Test tube insert, 4 x Ø 16 mm	L001860
MS 1.34	Test tube insert	L001830
MS 3.4	Microtiter plate attachment	0003426400
MS 3.5	PCR plate attachment, 96-well	0003428000

ACCESSORIES VORTEX 2 | VORTEX 3



VG 3.1	Standard attachment	0003341200
VG 3.2	One-hand attachment	0003342300
VG 3.21	Rubber mat	0020008398
VG 3.3	Universal attachment, 150 mm	0003342400
VG 3.30	Attachment for PCR-tubes, 0.2 ml	0025005779
VG 3.31	Test tube attachment for 54 Eppendorf tubes	0003344300
VG 3.32	Test tube attachment, 18 x Ø 10 mm	0003343900
VG 3.33	Test tube attachment, 12 x Ø 12 mm	0003344000
VG 3.34	Test tube attachment, 8 x Ø 16 mm	0003344100
VG 3.35	Test tube attachment, 8 x Ø 20 mm	0003344200
VG 3.36	Erlenmeyer flask attachment, 100 - 250 ml	0003342100
VG 3.37	Microtiter plate attachment	0003344400

Product	Description	Ident. No.
ACCESSORIES VXR		
VX 1	One-hand attachment, 1 – 250 ml	0000607200
VX 2	Test tube attachment, 36 × Ø 16 mm	0000568900
VX 2E.n	Eppendorf attachment, 64 × 1.5 ml	0020018016
VX 7	Dish attachment	0000953300
VX 8	Universal attachment	0000910400
VX 11	Basic holder	0003627700
VX 11.1	Test tube insert, 70 × Ø 10 mm	0003659000
VX 11.2	Test tube insert, 41 × Ø 12 mm	0003659100
VX 11.3	Test tube insert, 32 × Ø 16 mm	0003659200
VX 11.4	Test tube insert, 18 × Ø 20 mm	0003659300
VX 11.5	Attachment for 30 ml tubes, 12 × Ø 23 mm	0025005778
VX 11.6	Attachment for 50 ml tubes, 8 × Ø 27 mm	0025005777
VX 8.1	Clamping roll	0003375400



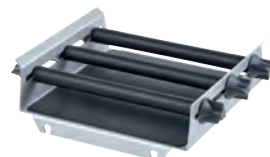
VX 2E.n



VX 2



VX 11.1



AS 130.1



AS 260.3



AS 1.10



AS 501.2



AS 501.3



AS 501.6

Product	Description	Ident. No.
ACCESSORIES KS 130 BASIC CONTROL		
AS 130.1	Universal attachment	0008017300
AS 130.2	Fixing clip attachment	0003115000
AS 130.3	Dish attachment	0003120000
AS 130.4	Test tube attachment	0003120300

Product	Description	Ident. No.
ACCESSORIES KS HS 260 BASIC CONTROL AND KS 3000		
AS 260.1	Universal attachment	0008017400
AS 260.2	Fixing clip attachment	0003115500
AS 260.3	Dish attachment	0003120600
AS 260.5	Separating funnel attachment	0003120900

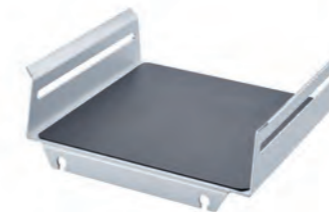
Product	Description	Ident. No.
ACCESSORIES KS HS 501 DIGITAL		
AS 501.1	Universal attachment	0008000200
AS 501.2	Separating funnel attachment	0008000300
AS 501.3	Separating funnel attachment	0008000400
AS 501.4	Fixing clip attachment	0002341100
AS 501.5	Dish attachment	0002339600
AS 501.6	Separating funnel attachment	0008000500



AS 1.400



AS 4000.1



AS 1.30



AS 1.31



AS 1.7



AS 1.13



AS 2.1



AS 2.4



AS 2.6

Product	Description	Ident. No.
ACCESSORIES KS 4000 I IC CONTROL		
AS 4000.1	Universal attachment	0008022200
AS 4000.2	Fixing clip attachment	0003710100
AS 4000.3	Dish attachment	0003710000
AS 1.400	Basic holder for AS 4000.1	0003710200
AS 1.401	Clamping roll for AS 4000.1	0003712000
AS 1.402	Fastening screw for AS 4000.1	0003712300

Product	Description	Ident. No.
ACCESSORIES		
AS 1.30	Basic holder for AS 130.1	0003148000
AS 1.60	Basic holder for AS 260.1	0003149000
AS 1.10	Basic holder for AS 501.1	0002339700
AS 1.31	Clamping roll for AS 130.1	0003030500
AS 1.61	Clamping roll for AS 260.1	0003030501
AS 1.11	Clamping roll for AS 501.1	0002339800
AS 1.6	Clamping device for AS 501.1	0001268400
AS 1.7	Clamping device for AS 501.1	0001269200
AS 1.12	Supporting bar for AS 1.10	0002594500
AS 1.13	Ground section holder for AS 1.10	0002597000
STICKMAX	Universal adhesive mat	0003920000
AS 2.0	Fixing clips, 10 ml	0020016475
AS 2.1	Fixing clips, 25 ml	0001234300
AS 2.2	Fixing clips, 50 ml	0001234400
AS 2.3	Fixing clips, 100 ml	0001234500
AS 2.4	Fixing clips, 200 250 ml	0001234600
AS 2.5	Fixing clips, 500 ml	0001234700
AS 2.6	Fixing clips, 1000 ml	0003819300
AS 2.7	Fixing clips, 2000 ml	0020016476



STICKMAX



designed for scientists

Everything for your Lab

IKA is your reliable partner in laboratory, analysis and process technology. When it comes to applications in the areas of stirring, mixing, tempering, distilling or grinding, market leaders rely on our proven products and technology. We are continually working to further develop our portfolio according to the needs of our customers. Building on this, we network our products and services to create holistic, application-oriented solutions and enable our customers to achieve the best possible results and step into the digital age.



BIOREACTORS



MIXING



HEATING / COOLING /
TEMPERING



LIQUID HANDLING



MEASURING VISCOSITY



VACUUM TECHNOLOGY



CRUSHING



LABORATORY SOFTWARE



SEPARATION



ELECTROCHEMISTRY
FLOW CHEMISTRY



REACTOR SYSTEMS



CALORIMETRY