

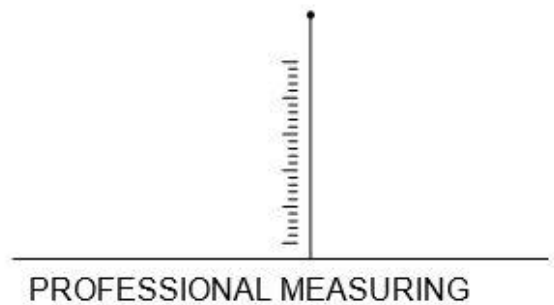


Sauter GmbH

# Instruction Manual / Data sheet

## SAUTER CB P1

V. 1.0  
01/2019  
GB



CB P1-BA-e-1910



# SAUTER CB P1

V. 1.0 01/2019

## Instruction Manual / Data sheet

---

---

Summarize:

<b>1</b>	<b>Short description .....</b>	<b>3</b>
<b>2</b>	<b>Available models.....</b>	<b>3</b>
<b>3</b>	<b>Introduction .....</b>	<b>3</b>
<b>4</b>	<b>Warning notes .....</b>	<b>3</b>
<b>5</b>	<b>Warranty .....</b>	<b>4</b>
<b>6</b>	<b>Detailed specifications .....</b>	<b>4</b>
<b>7</b>	<b>Wiring.....</b>	<b>5</b>
<b>8</b>	<b>Dimensions in mm .....</b>	<b>5</b>
<b>9</b>	<b>Certificate of Compliance.....</b>	<b>5</b>

## 1 Short description

- Stainless steel IP67 (acc. to EN 60529) bending beam load cell
- Suitable platform, hopper, bed and other weighing
- adhesive sealed
- Accuracy OIML R60 C3
- OIML certificated
- RoHS conform

## 2 Available models

Capacity	Model
100kg	CB 100-3P1
250kg	CB 250-3P1

## 3 Introduction

Please pay attention to the notes of the operating manual: read these operating manual carefully before commissioning, even if you already have experience with SAUTER measuring cells.

After receiving the measuring cell, it should be checked in advance whether no transport damage has occurred, whether the outer packaging or other parts or even the article itself has been damaged. If any damage is evident, please inform SAUTER GmbH immediately.

## 4 Warning notes

Observe the national accident prevention regulations.

Not correct executed use of the measuring cell can lead to serious injuries, death, material damage and personal injuries. Use only by trained and experienced people.

Never load more than the max. capacity to a measuring cell. Overloaded measuring cells no longer have the required accuracy. Overloaded or deformed measuring cells are no longer allowed to use and must be changed quickly.

Never step under suspended loads.

Always fasten overload- or break security to your construction.

Pay attention to the allowed static and dynamic loads of the used equipment.

Let the measuring cells calibrate at regular intervals.

Only load the measuring cell in its specified load direction. Avoid lateral forces.

Control the measuring cells to deformations and cracks.

Measuring cells with 4-Conductor cable will change their characteristic value when shortened or extended the cable length.

## 5 Warranty

The warranty expires at:

- Disregard of the specifications of the operating manual
- Modification or opening the measuring cell
- Overload
- Mechanical damages
- Damage caused by liquids or media
- Natural loss
- Not correct installation

## 6 Detailed specifications

Output sensitivity ( FS )	mV/V	3.0 ± 0.003
Maximum capacity ( E <sub>max</sub> )	kg	100, 200
Max.number of load cell	n <sub>LC</sub>	3000
Ratio of min. LC verification interval	$Y = E_{\max} / V_{\min}$	10000
Combined Error	%FS	≤± 0.023
Minimum dead load	Of E <sub>max</sub>	0%
Safe overload	of E <sub>max</sub>	150 %
Ultimate overload	of E <sub>max</sub>	300 %
Zero balance	of FS	< ± 1.0 %
Excitation, recommended voltage	V	5 ~ 12
Excitation maximum	V	18
Input resistance	Ω	350 ± 3.5
Output resistance	Ω	350 ± 3.5
Insulation resistance	MΩ	≥5000 ( at 50VDC )
Compensated temperature	°C	-10 ~+40
Operating temperature	°C	-35 ~ +65
Storage temperature	°C	-40 ~ +80
Recommended torque on fixation bolts	Nm	M12: 75

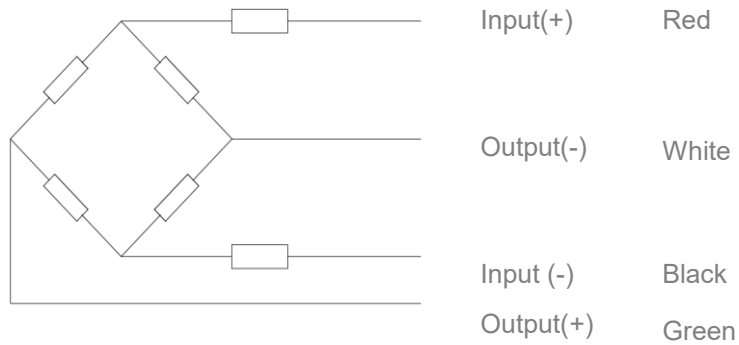
## 7 Wiring

Shielded, 4 cable. Shield not connected to element.

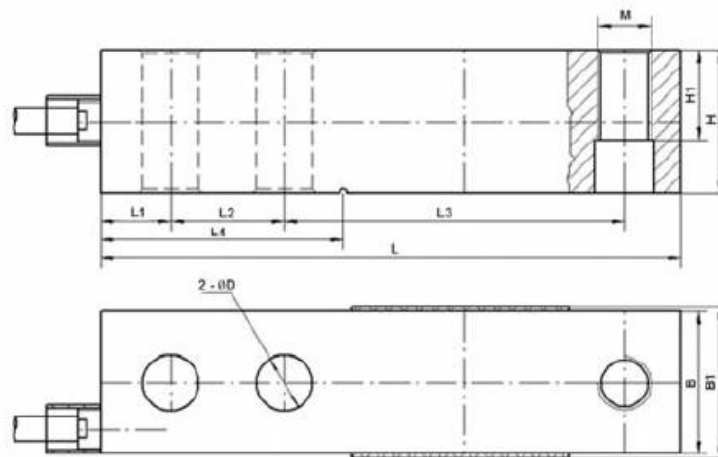
Cable diameter: Ø5mm.

Standard cable length: 4m

4-wire diagram



## 8 Dimensions in mm



Dimension Capacity	L	L1	L2	L3	L4	B	B1	H	H1	H2	H3	H4	ØD	M
100kg – 250kg	130	15.8	25.4	76.2	54.2	31.8	37	31.8	15.8	14.5	15.8	4.8	13.5	M 12 x 1.75

## 9 Certificate of Compliance

The Certificate of Compliance can be downloaded from the website [www.sauter.eu](http://www.sauter.eu)