



# Lab Shakers

Portfolio



IngenierimLab  
SCIENTIFIC EQUIPMENT  
FOR LABORATORY & INDUSTRY

@ Web contact

[www.imlab.eu](http://www.imlab.eu)  
[info@imlab.eu](mailto:info@imlab.eu)

☎ Phone

🇫🇷 +33(0)3 20 55 19 11  
🇧🇪 +32(0)16 73 55 72

# Table of Contents

What is the Model Number.....	2	Orbital Shaker and Reciprocating Shaker Accessories.....	5-8
Icon Guide.....	2	Incubating Cooling Orbital Shaker.....	9
Open Air Orbital Shakers.....	3	Microplate Shakers Incubating and Open Air.....	9
Extreme Environment Orbital Shaker.....	4	Incubating Cooling Thermal Shakers.....	10
Open Air Reciprocating Shaker.....	4	Rocking Shakers Incubating and Open Air.....	11
Incubating Orbital Shakers.....	4	Waving Shakers Incubating and Open Air.....	11

## What is the Model Number?



e-E51LD0403 = Endeavour 5000 Light Duty Open Air Shaker with 4kg capacity, 03 mm orbit and digital controls						
Category	Family	Series	Generation	Type	Capacity	Orbit
e-	E = Endeavor	5 = 5000	1 = first	LD = Light Duty	04 = 4 kg MP = Microplates	03 = 3mm 20 = 20mm

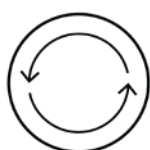


SHHD1619DG = Heavy Duty Open Air Shaker with 16 kg capacity, 19 mm orbit and digital controls					
SH	LD	MP	03	DG	-
Type	Family	Capacity	Orbit*	Front Panel Control	Tiers**
SH = Open Air Shakers	LD = Light Duty*** EX = Extreme Environment HD = Heavy Duty**** RK = Rocking WV = Waving RC = Reciprocating HS = High Speed	02 = 2 kg 04 = 4 kg 07 = 7 kg 16 = 16 kg 23 = 23 kg 45 = 45 kg 68 = 68 kg MP = Microplates	Orbit (mm): 03 = 3mm 15 = 15mm 19 = 19mm 25 = 25mm 50 = 50mm	AL = Analog DG = Digital	1 = 1 2 = 2
*Not applicable to RK and WV families **Analog Rockers Only ***LD models can handle samples up to 3,6 kg or 4 microplates or 2 micro-tube racks ****HD models can handle heavier samples and are available from 16 up to 68 kg					

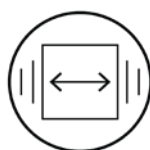


ISTHBLHTS = Incubating Cooling Thermal Shaker with block, heats only and touch screen controls					
IS	LD	04	H	DG	-
Type	Family	Capacity	Temperature Control	Front Panel Control	Opaque Lid Only
IS = Incubating Shakers	IC = Incubating/Cooling TH = Thermal Shakers HD = Heavy Duty** LD = Light Duty* RK = Rocking WV = Waving	02 = 2 kg 04 = 4 kg 16 = 16 kg 23 = 23 kg BL = Thermal Shaker Blocks MP = Microplate or Modular Blocks MP = Microplates	C = Heats & Cools H = Heat Only	DG = Digital TS = Touch Screen	L = Light Sensitive Samples
*LD models can handle samples up to 3,6 kg or 4 microplates or 2 micro-tube racks **HD models can handle heavier samples and are available from 16 kg up to 23 kg					

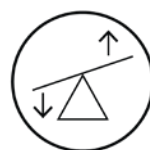
## Icon Guide



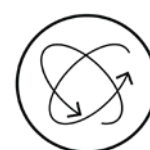
**Orbital**  
(uniform circular motion)



**Reciprocating**  
(straight-line repeating motion)



**Rocking**  
(seesaw motion)



**Waving**  
(3D rocking motion both side-to-side and front-to-back)

# Open Air Orbital Shakers



	ENDEAVOR™ Orbital Shaker		Heavy Duty Orbital Shakers		
Model	e-E51LD0403	e-E51LD0420	SHHD1619AL	SHHD1619DG	SHHD2325AL
Control	Digital		Analog	Digital	Analog
Weight Capacity	4 kg at 400 rpm linearly down to 1 kg at 800 rpm	4 kg up to 300 rpm	16 kg at 75 rpm linearly down to 2,3 kg at 500 rpm		23 kg at 125 rpm linearly down to 4,5 kg at 500 rpm
Tray Size (L × W)	300 × 222 mm		279 × 330 mm		457 × 610 mm
Vessel Capacity	see page 5-8, Accessory Table				
Orbit Diameter	3 mm	20 mm	19 mm		25 mm
Speed Range	100 to 800 rpm	50 to 300 rpm	25 to 500 rpm	15 to 500 rpm	25 to 500 rpm
Timer	up to 99 hours 59 minutes		up to 120 minutes	up to 160 hours	up to 120 minutes
Overload Protection	Yes		-	Yes	-
Audible Alarm	Yes		-	Yes	-
User Calibration (Speed)	-		-	Yes	-
Communication	RS232		-	RS232	-
Dimensions (L × W × H)	420 × 262 × 119 mm		413 × 355 × 149 mm		610 × 678 × 149 mm
Working Environment	-10°C to 40°C, 80% RH, non-condensing		AL (analog) models: 0°C to 40°C, 80% RH, non-condensing DG (digital) models: -10°C to 60°C, 80% RH, non-condensing Fit For Use in CO <sub>2</sub> Environment		
Power Input	24V DC, 1,25A			230V AC 50/60Hz, 120V AC 50/60Hz	



	Heavy Duty Orbital Shakers				
Model	SHHD2325DG	SHHD4525DG	SHHD4550DG	SHHD6825DG	SHHD6850DG
Control	Digital				
Weight Capacity	23 kg at 125 rpm linearly down to 4,5 kg at 500 rpm	45 kg at 125 rpm linearly down to 18 kg at 300 rpm		68 kg at 125 rpm linearly down to 18 kg at 300 rpm	
Tray Size (L × W)	457 × 610 mm	610 × 610 mm		610 × 910 mm	
Vessel Capacity	see page 5-8, Accessory Table				
Orbit Diameter	25 mm	25 mm	51 mm	25 mm	51 mm
Speed Range	20 to 500 rpm	15 to 500 rpm	15 to 300 rpm	15 to 500 rpm	15 to 300 rpm
Timer	up to 160 hours				
Overload Protection	Yes				
Audible Alarm	Yes				
User Calibration (Speed)	Yes				
Communication	RS232				
Dimensions (L × W × H)	610 × 678 × 149 mm	729 × 678 × 170 mm		744 × 914 × 170 mm	
Working Environment	AL (analog) models: 0°C to 40°C, 80% RH, non-condensing DG (digital) models: -10°C to 60°C, 80% RH, non-condensing Fit For Use in CO <sub>2</sub> Environment				
Power Input	230V AC 50/60Hz, 120V AC 50/60Hz				

## Extreme Environment Orbital Shaker

## Open Air Reciprocating Shaker



Extreme Environment Orbital Shaker	
Model	SHEX1619DG
Control	Digital
Weight Capacity	16 kg at 75 rpm, linearly down to 2,3 kg at 500 rpm
Tray Size (L x W)	279 x 330 mm
Vessel Capacity	see page 5-8, Accessory Table
Orbit Diameter	19 mm
Speed Range	15 to 500 rpm
Timer	up to 160 hours
Overload Protection	Yes
Audible Alarm	Yes
User Calibration (Speed)	Yes
Communication	RS232
Dimensions (L x W x H)	Shaker: 292 x 353 x 147 mm Controller: 147 x 353 x 109 mm
Working Environment	Shaker: -10°C to 60°C, 100% RH, condensing Controller: -10°C to 50°C, 80% RH, non-condensing Fit For Use in CO <sub>2</sub> Environment
Power Input	230V AC 50/60Hz, 120V AC 50/60Hz

Open Air Reciprocating Shaker	
Model	SHRC0719DG
Control	Digital
Weight Capacity	6,8 kg up to 300 rpm
Tray Size (L x W)	279 x 330 mm
Vessel Capacity	see page 5-8, Accessory Table
Orbit Diameter	19 mm
Speed Range	20 to 300 rpm
Timer	up to 160 hours
Overload Protection	Yes
Audible Alarm	Yes
User Calibration (Speed)	Yes
Communication	RS232
Dimensions (L x W x H)	413 x 355 x 149 mm
Working Environment	-10°C to 60°C, 80% RH, non-condensing Fit For Use in CO <sub>2</sub> Environment
Power Input	230V AC 50/60Hz, 120V AC 50/60Hz

## Incubating Orbital Shakers



Incubating Light Duty Orbital Shakers		Incubating Heavy Duty Orbital Shakers		
Model	ISLD04HDG	ISHD16HDG	ISHD23HDG	ISHD23CDG
Control	Digital			
Weight Capacity	3,6 kg at 1000 rpm 2,3 kg up to 1200 rpm	16 kg at 75 rpm linearly down to 2,3 kg at 500 rpm	23 kg at 125 rpm linearly down to 4,5 kg at 500 rpm	
Tray Size (L x W)	279 x 197 mm	279 x 330 mm	457 x 457 mm	
Vessel Capacity	see page 5-8, Accessory Table			
Orbit Diameter	3 mm	19 mm	25 mm	
Speed Range	100 to 1200 rpm	15 to 500 rpm		
Timer	up to 99 hours 59 minutes		up to 120 minutes	up to 160 hours
Overload Protection	Yes		-	Yes
Audible Alarm	Yes		-	Yes
User Calibration (Speed)			-	Yes
Communication	RS232		-	RS232
Dimensions (L x W x H)	420 x 262 x 119 mm		413 x 355 x 149 mm	
Working Environment	-10°C to 40°C, 80% RH, non-condensing		AL (analog) models: 0°C to 40°C, 80% RH, non-condensing DG (digital) models: -10°C to 60°C, 80% RH, non-condensing Fit For Use in CO <sub>2</sub> Environment	
Power Input	24V DC, 1,25A			230V AC 50/60Hz, 120V AC 50/60Hz

# Orbital Shaker and Reciprocating Shaker Accessories



Universal Platform



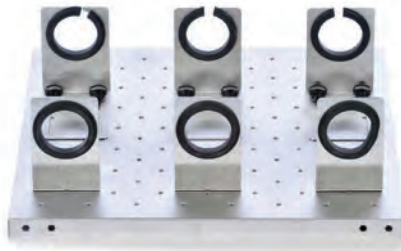
Culture Platform with Mat



Adjustable Platform



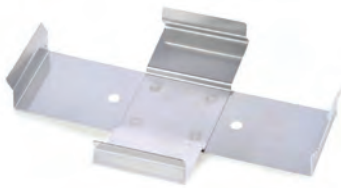
Dedicated Platform



Separatory Funnel Platform



Large Vessel Carrier



Clamp Microplate  
Stainless Steel



Flask Clamp PVC



Media Bottle Clamp



Flask Clamp



Micro Tube Rack



Test Tube Rack



Adjustment Bar



Double Tier Braces, Set of 4

# Orbital Shaker and Reciprocating Shaker Accessories

Shaker Model	e-E51LD0403 e-E51LD0420		SHHD1619AL SHHD1619DG SHEX1619DG								SHHD2325AL SHHD2325DG				SHHD4525DG SHHD4550DG		SHHD6825DG SHHD6850DG		SHRC0719DG				ISLD04HDG		ISHD16HDG		ISHD23CDG ISHD23HDG	
	Construction	+ Platform 30770938 on pre-installed tray	on pre-installed tray	+ Platform 30400052 on pre-installed tray	+ Platform 30400053	+ Platform 30400054	+ Platform 30400054 2x stacked*	+ Platform 30400056	+ Platform 30400056 2x stacked*	on pre-installed tray	+ Platform 30400056	+ Platform 30400058	+ Platform 30400058 2x stacked*	on pre-installed tray	+ Platform 30400057	on pre-installed tray	+ Platform 30400059	on pre-installed tray	+ Platform 30400052	+ Platform 30400053	+ Platform 30400054	+ Platform 30400056	on pre-installed tray	on pre-installed tray	+ Platform 30400052	on pre-installed tray	+ Platform 30400055	
P/N	Description																											
30400084	Flask Clamp, 10 ml	7	39	-	60	60	113	226	158	316	-	158	203	406	-	221	-	336	-	60	60	113	158	35	-	60	-	113
30400085	Flask Clamp, 25 ml	7	24	-	25	30	64	128	88	176	-	88	112	224	-	121	-	160	-	25	30	64	88	20	-	25	-	64
30400086	Flask Clamp, 50 ml	7	24	-	13	15	32	64	44	88	-	44	56	112	-	61	-	94	-	13	15	32	44	12	-	13	-	32
30400087	Flask Clamp, 125 ml	6	12	-	10	12	20	40	28	56	-	28	36	72	-	41	-	61	-	10	12	20	28	8	-	10	-	20
30400088	Flask Clamp, 250 ml	6	8	-	9	12	20	40	28	56	-	28	36	72	-	41	-	64	-	9	12	20	28	5	-	9	-	20
30400089	Flask Clamp, 500 ml	4	6	-	7	8	13	26	20	40	-	20	26	52	-	25	-	40	-	7	8	13	20	-	-	7	-	13
30400090	Erlenmeyer Flask Clamp, 11	-	3	-	4	4	8	16	12	24	-	12	15	30	-	16	-	24	-	4	4	8	12	-	-	4	-	8
30400091	Erlenmeyer Flask Clamp, 21	-	-	-	-	3	5	10	6	12	-	6	8	16	-	9	-	14	-	-	3	5	6	-	-	-	-	5
30400092	Erlenmeyer Flask Clamp, 2,8l	-	-	-	-	1	2	4	3	6	-	3	3	6	-	5	-	7	-	-	1	2	3	-	-	-	-	2
30400093	Erlenmeyer Flask Clamp, 3l	-	-	-	-	1	2	4	3	6	-	3	4	8	-	5	-	7	-	-	1	2	3	-	-	-	-	2
30400094	Erlenmeyer Flask Clamp, 4l	-	-	-	-	1	4	8	4	8	-	4	6	12	-	5	-	9	-	-	1	4	4	-	-	-	-	4
30400095	Erlenmeyer Flask Clamp, 5l	-	-	-	-	1	4	8	4	8	-	4	6	12	-	5	-	7	-	-	1	4	4	-	-	-	-	4
30400096	Erlenmeyer Flask Clamp, 6l	-	-	-	-	1	2	4	3	6	-	3	4	8	-	5	-	7	-	-	1	2	3	-	-	-	-	2
30400097	Media Bottle Clamp, 500ml	4	6	-	5	6	16	32	20	40	-	20	28	56	-	25	-	40	-	5	6	16	20	-	-	5	-	16
30400098	Media Bottle Clamp, 1000ml	-	-	-	2	5	10	20	13	26	-	13	18	36	-	18	-	30	-	2	5	10	13	-	-	2	-	10
30400099	Flask Clamp PVC, 125 ml	6	12	-	10	12	20	40	28	56	-	28	36	72	-	41	-	61	-	10	12	20	28	8	-	10	-	20
30400100	Flask Clamp PVC, 250 ml	6	8	-	8	10	18	36	25	50	-	25	33	66	-	35	-	55	-	8	10	18	25	4	-	8	-	18
30400101	Flask Clamp PVC, 500 ml	-	4	-	5	6	12	24	16	32	-	16	20	40	-	24	-	38	-	5	6	12	16	-	-	5	-	12
30400102	Flask Clamp PVC, 1000 ml	-	-	-	2	4	8	16	10	20	-	10	14	28	-	13	-	22	-	2	4	8	10	-	-	2	-	8
30400103	Flask Clamp PVC, 2000 ml	-	-	-	-	3	4	8	6	12	-	6	8	16	-	9	-	13	-	-	3	4	6	-	-	-	-	4
30400104	Clamp Microplate Stainless Steel	-	-	-	4	6	12	24	18	36	-	18	21	42	-	24	-	36	-	4	6	12	18	-	-	4	-	12
30400105	Test Tube Rack, 13 mm Pivoting (90 tubes)	-	-	-	1	2	2	4	3	6	-	3	4	8	-	4	-	6	-	1	2	2	3	-	-	1	-	2
30400106	Test Tube Rack, 16 mm Pivoting (60 tubes)	-	-	-	1	2	2	4	3	6	-	3	4	8	-	4	-	6	-	1	2	2	3	-	-	1	-	2
30400107	Test Tube Rack, 20 mm Pivoting (40 tubes)	-	-	-	1	2	2	4	3	6	-	3	4	8	-	4	-	6	-	1	2	2	3	-	-	1	-	2
30400108	Test Tube Rack, 25 mm Pivoting (24 tubes)	-	-	-	1	2	2	4	3	6	-	3	4	8	-	4	-	6	-	1	2	2	3	-	-	1	-	2
30400109	Test Tube Rack, 30 mm Pivoting (21 tubes)	-	-	-	1	2	2	4	3	6	-	3	4	8	-	4	-	6	-	1	2	2	3	-	-	1	-	2
30400110	Test Tube Rack, 10-14 mm Stationary (48 tubes)	-	-	-	-	-	3	6	5	10	-	5	6	12	-	7	-	5	-	-	-	3	5	-	-	-	-	3
30400111	Test Tube Rack 16-20 mm Stationary (33 tubes)	-	-	-	-	-	3	6	5	10	-	5	6	12	-	7	-	5	-	-	-	3	5	-	-	-	-	3
30400112	Test Tube Rack, 21-25 mm Stationary (21 tubes)	-	-	-	-	-	3	6	5	10	-	5	6	12	-	7	-	5	-	-	-	3	5	-	-	-	-	3

# Orbital Shaker and Reciprocating Shaker Accessories

Shaker Model	e-E51LD0403 e-E51LD0420		SHHD1619AL SHHD1619DG SHEX1619DG							SHHD2325AL SHHD2325DG				SHHD4525DG SHHD4550DG		SHHD6825DG SHHD6850DG		SHRC0719DG				ISLD04HDG		ISHD16HDG		ISHD23HDG ISHD23CDG			
	P/N	Description	on pre-installed tray	+ Platform 30770938	on pre-installed tray	+ Platform 30400052	+ Platform 30400053	+ Platform 30400054	+ Platform 30400054 2x stacked*	+ Platform 30400056	+ Platform 30400056 2x stacked*	on pre-installed tray	+ Platform 30400056	+ Platform 30400058	+ Platform 30400056 2x stacked*	on pre-installed tray	+ Platform 30400057	on pre-installed tray	+ Platform 30400059	on pre-installed tray	+ Platform 30400052	+ Platform 30400053	+ Platform 30400054	+ Platform 30400056	on pre-installed tray	on pre-installed tray	+ Platform 30400052	on pre-installed tray	+ Platform 30400055
30400113	Test Tube Rack, 50 ml Tubes Stationary (17 tubes)	-	-	-	-	-	3	6	5	10	-	-	5	6	12	-	7	-	5	-	-	3	5	-	-	-	-	-	3
30400114	Micro Tube Rack, (70 tubes)	2	2	-	2	2	4	8	6	12	-	-	6	8	16	-	8	-	7	-	2	2	4	6	2	-	2	-	4
30400115	Test Tube Rack, 10-13 mm Diameter (63 tubes)	2	2	-	2	2	4	8	6	12	-	-	6	8	16	-	8	-	7	-	2	2	4	6	1	-	2	-	4
30400116	Test Tube Rack, 14-16 mm Diameter (48 tubes)	2	2	-	2	2	4	8	6	12	-	-	6	8	16	-	8	-	7	-	2	2	4	6	1	-	2	-	4
30400117	Test Tube Rack, 18-20 mm Diameter (35 tubes)	2	2	-	2	2	4	8	6	12	-	-	6	8	16	-	8	-	7	-	2	2	4	6	-	-	2	-	4
30400118	Test Tube Rack, 22-25 mm Diameter (24 tubes)	2	2	-	2	2	4	8	6	12	-	-	6	8	16	-	8	-	7	-	2	2	4	6	-	-	2	-	4
30400119	Test Tube Rack For 15 ml Tubes (35 tubes)	2	2	-	2	2	4	8	6	12	-	-	6	8	16	-	8	-	7	-	2	2	4	6	1	-	2	-	4
30400120	Test Tube Rack For 50 ml Tubes (12 tubes)	2	2	-	2	2	4	8	6	12	-	-	6	8	16	-	8	-	7	-	2	2	4	6	1	-	2	-	4
30400051	Double Tier Braces, Set of 4	-	-	-	-	-	-	1	-	1	-	-	-	-	1	-	-	-	-	-	-	-	-	-	-	-	-	-	-
30400052	Universal Platform, 28 x 33 cm	-	-	1	-	-	-	-	-	-	-	-	-	-	-	-	-	-	-	1	-	-	-	-	1	-	-	-	-
30400053	Universal Platform, 33 x 33 cm	-	-	1	-	-	-	-	-	-	-	-	-	-	-	-	-	-	-	1	-	-	-	-	-	-	-	-	-
30400054	Universal Platform, 46 x 46 cm	-	-	1+*	-	-	-	-	-	-	-	-	-	-	-	-	-	-	-	1	-	-	-	-	-	-	-	-	-
30400055	Universal Platform, 46 x 46 cm, S/S I-HR	-	-	-	-	-	-	-	-	-	-	-	-	-	-	-	-	-	-	-	-	-	-	-	-	-	1	-	-
30400056	Universal Platform, 61 x 46 cm	-	-	1+*	-	-	-	-	-	-	1	-	-	-	-	-	-	-	-	1	-	-	-	-	-	-	-	-	-
30400057	Universal Platform, 61 x 61 cm	-	-	-	-	-	-	-	-	-	-	-	-	-	-	1	-	-	-	-	-	-	-	-	-	-	-	-	-
30400058	Universal Platform, 76 x 46 cm	-	-	-	-	-	-	-	-	-	1+*	-	-	-	-	-	-	-	-	-	-	-	-	-	-	-	-	-	-
30400059	Universal Platform, 91 x 61 cm	-	-	-	-	-	-	-	-	-	-	-	-	-	-	-	-	1	-	-	-	-	-	-	-	-	-	-	-
30770938	Universal Platform 30 x 22 cm e-E51LD	1	-	-	-	-	-	-	-	-	-	-	-	-	-	-	-	-	-	-	-	-	-	-	-	-	-	-	-
30770935	Rubber Mat 29 x 22 cm	1	-	-	-	-	-	-	-	-	-	-	-	-	-	-	-	-	-	-	-	-	-	-	-	-	-	-	-
30400060	Rubber Mat, 28 x 33 cm	-	-	1	1	-	-	-	-	-	-	-	-	-	-	-	-	-	-	-	1	-	-	-	-	1	1	-	-
30400061	Rubber Mat, 33 x 33 cm	-	-	-	-	1	-	-	-	-	-	-	-	-	-	-	-	-	-	-	-	1	-	-	-	-	-	-	-
30400062	Rubber Mat, 46 x 46 cm	-	-	-	-	-	1	2	-	-	-	-	-	-	-	-	-	-	-	-	-	1	-	-	-	-	-	-	-
30400063	Rubber Mat, 46 x 61 cm	-	-	-	-	-	-	-	1	2	-	-	1	-	-	-	-	-	-	-	-	-	-	1	-	-	-	-	-
30400064	Rubber Mat, 61 x 61 cm	-	-	-	-	-	-	-	-	-	-	-	-	-	-	1	-	-	-	-	-	-	-	-	-	-	-	-	-
30400065	Rubber Mat, 61 x 91 cm	-	-	-	-	-	-	-	-	-	-	-	-	-	-	-	-	1	-	-	-	-	-	-	-	-	-	-	-
30400066	Culture Platform with Mat, 46 x 46 cm	-	-	1+*	-	-	-	-	-	-	-	-	-	-	-	-	-	-	-	1	-	-	-	-	-	-	-	-	-
30400067	Culture Platform with Mat, 46 x 61 cm	-	-	1+*	-	-	-	-	-	-	1	-	-	-	-	-	-	-	-	1	-	-	-	-	-	-	-	-	-
30400068	Adjustable Platform, 46 x 46 cm	-	-	1	-	-	-	-	-	-	-	-	-	-	-	-	-	-	-	-	-	-	-	-	-	-	-	-	-

\*To stack platforms select (2) stackable platforms of the same size and (1) tier brace kit (Item No. 30400051)

# Orbital Shakers and Reciprocating Shaker Accessories

Shaker Model	P/N	Description	e-E51LD0403 e-E51LD0420		SHHD1619AL SHHD1619DG SHEX1619DG										SHHD2325AL SHHD2325DG				SHHD425DG SHHD450DG		SHHD6825DG SHHD6850DG		SHRC0719DG						ISLD04HDG	ISHD16HDG		ISHD23HDG ISHD23CDG	
			on pre-installed tray	+ Platform 30770938	on pre-installed tray	+ Platform 30400052	+ Platform 30400053	+ Platform 30400054	+ Platform 30400054 2x stacked*	+ Platform 30400056	+ Platform 30400056 2x stacked*	on pre-installed tray	+ Platform 30400058	+ Platform 30400058 2x stacked*	on pre-installed tray	+ Platform 30400057	on pre-installed tray	+ Platform 30400059	on pre-installed tray	on pre-installed tray	+ Platform 30400052	+ Platform 30400053	+ Platform 30400054	+ Platform 30400056	on pre-installed tray	on pre-installed tray	+ Platform 30400052	+ Platform 30400055					
30400069	Adjustable Platform, 61 x 46 cm	-	-	-	-	-	-	-	-	-	-	-	-	-	-	-	-	-	-	-	-	-	-	-	-	-	-	-					
30400121	Adjustable Platform 22 x 30 cm, 2 bars	1	-	-	-	-	-	-	-	-	-	-	-	-	-	-	-	-	-	-	-	-	-	-	-	-	-	-					
30400070	Large Vessel Carrier, 76 x 46 cm	-	-	-	-	-	-	-	-	-	-	-	-	-	-	-	-	-	-	-	-	-	-	-	-	-	-	-					
30400071	Large Vessel Carrier, 61 x 61 cm	-	-	-	-	-	-	-	-	-	-	-	-	-	-	-	-	-	-	-	-	-	-	-	-	-	-	-					
30400072	Large Vessel Carrier, 91 x 61 cm	-	-	-	-	-	-	-	-	-	-	-	-	-	-	-	-	-	-	-	-	-	-	-	-	-	-	-					
30400073	Adjustment Bar, 46 cm	-	-	-	-	-	-	-	-	-	-	-	-	-	-	-	-	-	-	-	-	-	-	-	-	-	-	-					
30400074	Adjustment Bar, 61 cm	-	-	-	-	-	-	-	-	-	-	-	-	-	-	-	-	-	-	-	-	-	-	-	-	-	-	-					
30400122	Roller Bar, 22 cm (for adjustable platform only)	1+	-	-	-	-	-	-	-	-	-	-	-	-	-	-	-	-	-	-	-	-	-	-	-	-	-	-					
30400075	Dedicated Platform, 33 x 33 cm, 125 ml (16 pcs)	-	-	1	-	-	-	-	-	-	-	-	-	-	-	-	-	-	-	-	-	-	-	-	-	-	-	-					
30400076	Dedicated Platform, 33 x 33 cm, 250 ml (12 pcs)	-	-	1	-	-	-	-	-	-	-	-	-	-	-	-	-	-	-	-	-	-	-	-	-	-	-	-					
30400077	Dedicated Platform, 33 x 33 cm, 500 ml (8 pcs)	-	-	1	-	-	-	-	-	-	-	-	-	-	-	-	-	-	-	-	-	-	-	-	-	-	-	-					
30400078	Dedicated Platform, 33 x 33 cm, 1000 ml (4 pcs)	-	-	1	-	-	-	-	-	-	-	-	-	-	-	-	-	-	-	-	-	-	-	-	-	-	-	-					
30400079	Dedicated Platform, 46 x 46 cm, 125 ml (27 pcs)	-	-	1+	-	-	-	-	-	-	-	-	-	-	-	-	-	-	-	-	-	-	-	-	-	-	-	-					
30400080	Dedicated Platform, 46 x 46 cm, 250 ml (20 pcs)	-	-	1+	-	-	-	-	-	-	-	-	-	-	-	-	-	-	-	-	-	-	-	-	-	-	-	-					
30400081	Dedicated Platform, 46 x 46 cm, 500 ml (13 pcs)	-	-	1+	-	-	-	-	-	-	-	-	-	-	-	-	-	-	-	-	-	-	-	-	-	-	-	-					
30400082	Dedicated Platform, 46 x 46 cm, 1000 ml (9 pcs)	-	-	1+	-	-	-	-	-	-	-	-	-	-	-	-	-	-	-	-	-	-	-	-	-	-	-	-					
30400083	Separatory Funnel Platform 46 x 46 cm	-	-	1	-	-	-	-	-	-	-	-	-	-	-	-	-	-	-	-	-	-	-	-	-	-	-	-					
30400124	Dimpled Mat, 22 x 30 cm	1	-	-	-	-	-	-	-	-	-	-	-	-	-	-	-	-	-	-	-	-	-	-	-	-	-	-					
30770939	Sticky Mat 22 x 18 cm	1+	1+	1+	1+	1+	1+	1+	1+	1+	1+	1+	1+	1+	1+	1+	1+	1+	1+	1+	1+	1+	1+	1+	1+	1+	1+	1+					

\*To stack platforms select (2) stackable platforms of the same size and (1) tier brace kit (Item No. 30400051)

# Incubating Cooling Orbital Shaker



*Incubating Cooling Orbital Shaker*

Model	ISICMBCDG
Control	Digital
Capacity	2 Microplates / 2 Modular Blocks
Orbit Diameter	3 mm
Speed Range	100 to 1200 rpm (microplates) 100 to 600 rpm (blocks)
Temperature Range	10°C below Ambient – 65°C
Temperature Increment	1°C
Temperature Uniformity	±0,5°C at 37°C
Timer	up to 160 hours
Overload Protection	Yes
Audible Alarm	Yes
User Calibration (Speed)	Yes
Communication	-
Dimensions (L x W x H)	419 x 257 x 279mm
Working Environment	5°C – 40°C, 80% RH, non-condensing
Power Input	230V AC 50/60Hz 120V AC 50/60Hz

Item No.	Description	Max. per Shaker	No. of Wells	Well Diameter (mm)	Well Depth (mm)
30400151	Module Block for 10mm Ø Test Tubes	2	24	10,7	48,4
30400152	Module Block for 12/13 mm Ø Tubes	2	20	13,9	48,4
30400156	Module Block Combination	2	14	26,2; 13,8; 8,3	48,4
30400157	Module Block for 0,5ml Microtaper	2	30	7,9	27,6
30400158	Module Block for 6 mm Ø Test Tubes	2	30	8,3	48,4
30400159	Module Block for 1,5ml Microtaper	2	20	11,1	39,1
30400168	Module Block for 50ml Conical Centrifuge Tubes	2	5	29	47,6
30400172	Module Block for 15 ml Conical Centrifuge Tubes	2	12	17,1	44,5
30400182	Module Block For Vials 12 mm Ø	2	20	12,7	30
30400183	Module Block For Vials 15 mm Ø	2	20	15,8	35
30400184	Module Block For Vials 17 mm Ø	2	12	17,8	45
30400185	Module Block For Vials 19 mm Ø	2	12	19,7	45
30400186	Module Block For Vials 21 mm Ø	2	9	21,7	45
30400187	Module Block For Vials 23 mm Ø	2	8	23,8	45
30400188	Module Block For Vials 25 mm Ø	2	8	25,8	45
30400189	Module Block For Vials 28 mm Ø	2	6	28,8	45
30400190	Module Block For Vials 16 mm Ø	2	15	16,4	45
30400191	Module Block for 2,0ml Tubes	2	20	11,5	38,1
30400193	Module Block Combo, 50 ml, 15 ml, 1,5 ml	2	9	29; 17,1; 11,1	47,6; 44,5; 39,1
30400194	Module Block Combo – Micro Tube	2	21	11,5; 11,1; 7,9	38,1; 39,1; 27,6

# Microplate Shakers Incubating and Open Air



*Incubating Light Duty Orbital Shakers*

*ENDEAVOR™ Orbital Shakers*

*High Speed Microplate Shakers*

Model	ISLDMPHDG	ISLDMPHDGL	e-E51LDMPO3	SHHSMPDG
Lid	Transparent	Opaque	-	-
Control	Digital			
Weight Capacity	4 Microplates or 2 Micro-tube Racks			3,2 kg or 48 Microplates in stacks up to 12,7 cm
Tray Size (L x W)	279 x 197mm			311 x 279mm
Orbit Diameter	3 mm			3,6 mm
Speed Range	100 to 1200 rpm			600 to 2500 rpm
Temperature Range	Ambient +5°C – 65°C			-
Temperature Increment	1°C			-
Temperature Uniformity	±0,5°C at 37°C			-
Timer	up to 160 hours			up to 99 hours 59 minutes
Overload Protection	Yes			-
Audible Alarm	Yes			-
User Calibration (Temperature)	Yes			-
Communication	-			RS232
Dimensions (L x W x H)	432 x 279 x 197mm			394 x 305 x 325mm
Working Environment	5°C – 40°C, 80% RH, non-condensing			-10°C – 40°C, 80% RH, non-condensing
Power Input	230V AC 50/60Hz, 120V AC 50/60Hz			230V AC 50/60Hz 120V AC 50/60Hz
<b>Accessories</b>				
30400114 Micro Tube Rack	2	2	2	-
30772773 Deep Plate Kit, set of 4	1	1	1	-

# Incubating Cooling Thermal Shakers



Incubating Cooling Thermal Shakers		
Model	ISTHBLCTS / ISTHBLCTS <sup>*</sup>	ISTHBLHTS / ISTHBLHTS <sup>*</sup>
Control	10,9 cm color touchscreen LCD	
Capacity	1 Thermal Block	
Orbit Diameter	3 mm	
Speed Range	300 to 3000 rpm	
Temperature Range	Ambient +4°C – 100°C	17°C below Ambient – 100°C
Temperature Increment	0,1°C	
Temperature Accuracy	±1°C between 20°C and 45°C; ±2°C above 45°C	±0,5°C between 20°C and 45°C; ±2°C below 20°C and above 45°C
Heating Rate	5°C/min	
Cooling Rate	Above ambient 2-3°C/min, Below ambient 0,5-1,0°C/min	
Timer	up to 99 hours 59 minutes	
Audible Alarm	Yes	
User Calibration (Temperature)	Yes	
Communication	USB	
Dimensions (L x W x H)	269 x 262 x 137 mm	
Working Environment	5°C – 35°C, 80% RH, non-condensing	
Power Input	230V AC 50/60Hz, 120V AC 50/60Hz	

\*Accessory block not included with unit.



Item No.	Description	Dimensions (L x W x H)	Well Size	Well Depth	N° of Wells
30400126	Microplate Thermal Block with Lid	11,9 x 16,3 x 7,6 cm	12,8 x 8,6 x 0,25 cm	2,30 cm	N/A
30400127	384 Well PCR Plate Thermal Block with Lid	11,9 x 16,3 x 7,6 cm	ø 0,40 cm	0,81 cm	N/A
30400128	0,2 ml PCR Plate/Tube Thermal Block with Lid	11,9 x 16,3 x 7,6 cm	ø 0,64 cm	1,27 cm	N/A
30400129	Block For 30 x 0,5 ml Tubes	10,2 x 14,2 x 4,6 cm	ø 0,79 cm	2,46 cm	30
30400130	Block For 24 x 1,5 ml Tubes	10,2 x 14,2 x 5,3 cm	ø 1,11 cm	3,53 cm	24
30400131	Block For 24 x 2,0 ml Tubes	10,2 x 14,2 x 5,3 cm	ø 1,15 cm	3,53 cm	24
30400133	Block For 24 x 2,0 ml Cryotubes	10,2 x 14,2 x 5,6 cm	ø 1,26 cm	3,60 cm	24
30400134	Block For 9 x 5 ml Eppendorf Tubes	10,4 x 14,5 x 7,1 cm	ø 1,68 cm	4,90 cm	9
30400135	Block For 8 x 15 ml Conical Tubes	10,7 x 14,7 x 12,7 cm	ø 1,73 cm	10,44 cm	9
30400136	Block For 4 x 50 ml Conical Tubes	10,2 x 14,5 x 12,2 cm	ø 3,00 cm	10,09 cm	4
30400250	Rack For 30 x 0,5 ml Tube Block			N/A	
30400251	Rack For 24 x 1,5 / 24 x 2,0 ml Tube Blocks			N/A	
30400252	Cover For 0,5 ml / 1,5 ml / 2,0 ml Tube Blocks			N/A	

## Rocking Shakers Incubating and Open Air



Model	Incubating Rocking & Waving Shakers		Rocking & Waving Shakers	
	ISRK04HDG	SHRK04DG	SHRK07AL1	SHRK07AL2
Control	Digital		Analog	
Motion / Tilt Angle	Rocking / 0 – 15°			
Weight Capacity	4,5 kg		7,3 kg	
Tray Size (L x W)	254 x 191 mm	324 x 254 mm	356 x 279 mm	
Tiers	1		1	2
Speed Range	1 to 50 rpm		1 to 75 rpm	
Temperature Range	Ambient +5°C – 65°C	-		-
Temperature Increment	1°C	-		-
Temperature Uniformity	±0,5°C at 37°C	-		-
Timer	up to 160 hours		up to 120 minutes	
Overload Protection	Yes		-	
Audible Alarm	Yes		-	
Dimensions (L x W x H)	419 x 257 x 274 mm	425 x 254 x 140 mm	425 x 279 x 165 mm	425 x 279 x 241 mm
Interior Dimensions (L x W x H)	273 x 197 x 970 mm	-		-
Working Environment	5°C – 40°C, 80% RH, non-condensing	-10°C – 60°C, 80% RH, non-condensing		-
Power Input	230V AC 50/60Hz, 120V AC 50/60Hz			
<b>Accessories</b>				
30400137 Double Tier Platform Kit SHRK04DG	-	1	-	-
30400139 Double Tier Platform Kit SHRK07AL	-	-	1	-
30400140 Dimpled Mat SHRK04DG	-	1	-	-
30400144 Dimpled Mat SHRK07AL / SHWV02AL	-	-	1	1

## Waving Shakers Incubating and Open Air



Model	Incubating Rocking & Waving		Rocking & Waving Shakers	
	ISWV02HDG	SHWV02DG	SHWV02AL	
Control	Digital		Analog	
Motion / Tilt Angle	Waving / 0 – 20°		Waving / 0 – 16°	
Weight Capacity	2,3 kg		-	
Tray Size (L x W)	235 x 184 mm	299 x 222 mm	356 x 279 mm	
Speed Range	1 to 30 rpm		1 to 75 rpm	
Temperature Range	Ambient +5°C – 65°C	-		-
Temperature Increment	1°C	-		-
Temperature Uniformity	±0,5°C at 37°C	-		-
Timer	up to 160 hours		up to 120 minutes	
Overload Protection	Yes		-	
Audible Alarm	Yes		-	
Dimensions (L x W x H)	419 x 257 x 274 mm	432 x 279 x 152 mm	425 x 279 x 165 mm	
Interior Dimensions (L x W x H)	273 x 197 x 860 mm	-		-
Working Environment	5°C – 40°C, 80% RH, non-condensing	-10°C – 60°C, 80% RH, non-condensing		-
Power Input	230V AC 50/60Hz, 120V AC 50/60Hz			
<b>Accessories</b>				
30400138 Double Tier Platform Kit SHWV02DG	-	1	-	
30400142 Dimpled Mat SHWV02DG	-	1	-	
30400144 Dimpled Mat SHRK07AL / SHWV02AL	-	-	1	